

**PITMAN ROAD**  
CHURCH OF CHRIST

March 1, 2020  
Volume 2, Issue 3  
500 Pitman Road  
Sewell, NJ 08080  
856-589-1500  
[www.pitmanroadcoc.com](http://www.pitmanroadcoc.com)

# PITMAN ROAD POST



**CAMP MANATAWNY ISSUE**

**Our Mission**

Meet others where they are and together be transformed into the image of Christ.



# MANATAWNY SUMMER CAMP SCHEDULE

Year after year, campers return to Camp Manatawny to renew the strong bonds of friendship they have built while at Camp. Camp Manatawny hopes to provide each and every camper with a meaningful and memorable experience. The ultimate desire and hope of each director and staff member is for young people's lives to be transformed through the love of Jesus!

## Overnight Camp

**For campers completing 1<sup>st</sup> grade through 12<sup>th</sup> grade; \$325 per week**

Overnight camp allows campers to enjoy the adventures and wonder of the outdoors, while growing in their relationship with God and others. They will participate in a large variety of activities, while learning Christian values and maturing physically, emotionally, and spiritually. Here, campers will develop life-long relationships, all while having the time of their lives!

**SENIOR HIGH 2**, Grades 11 & 12: June 27 - July 4

**SENIOR HIGH 1**, Grades 9 & 10: July 4 - July 11

**JR. HIGH 2**, Grades 7, 8, & 9 - July 11 - July 18

**INTERMEDIATE**, Grades 4, 5, & 6 - July 18 - July 25

**JR. HIGH 1**, Grades 5, 6, & 7 - July 25 - Aug. 1

**ELEMENTARY 2**, Grades 3 & 4 - Aug. 1 - Aug. 8

**ELEMENTARY 1**, Grades 1 & 2 - Aug. 8 - Aug. 15

## Day Camp:

**For campers completing 1<sup>st</sup> grade through 6<sup>th</sup> grade; \$175 per week**

Day camp provides a safe, nurturing, and fun atmosphere, designed for younger campers. Campers participate in small group Bible teaching, high-energy large group sessions, and activities such as archery, swimming, climbing wall, crafts, and more! Day campers receive most of the benefits and activities of the overnight camps, but without the overnight experience.

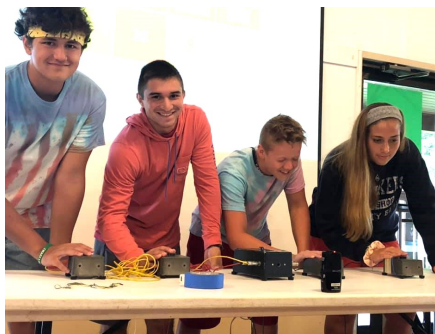
**(Sunday to Friday, 8:00 am to 5:30 pm)**

**INTERMEDIATE**, Grades 4, 5, & 6: July 19 - July 24

**ELEMENTARY 2**, Grades 3 & 4: Aug. 2 - Aug. 7

**ELEMENTARY 1**, Grades 1 & 2: Aug. 9 - Aug. 14

Registration for 2020 Summer Sessions is now open. Go to **[www.manatawny.org](http://www.manatawny.org)** for more information!



## **CAMP FEES AND DISCOUNTS FOR 2020**

**\$295 Early Bird Discount** if paid in full by April 30.

**\$325 after April 30.** A deposit of \$100 (non-refundable) is required at the time of registration. Any balance not paid in full, or registrations made within one week prior to the start of the session, will pay an additional \$25 fee.

**First-Time Camper Discount:** First time campers

are welcomed with a \$25 discount.

**Multi-Child Discount:** Families that register more than two campers from their immediate family or legal guardian will receive a \$25 discount per additional camper. Applies to the 3rd or more child.

**Multi-Week Discount: The second week is only \$199!** Only applies to campers in 5th through 9th grades.

# CAMP MANATAWNY CALENDAR OF EVENTS FOR 2020

## WORK AND WORSHIP WEEKEND

April 17 - 19

**Help us get Camp ready for summer!** Join us for a weekend of work, worship, and fellowship! There will be all kinds of work available for all different talents!

For more information and to register, please send an e-mail to [stacy.drum@yahoo.com](mailto:stacy.drum@yahoo.com).

**Registration for this session will end on April 17.**

---

## AREA WIDE WORSHIP

April 26 and November 1

**Do you ever feel like your church is the only one around?** Us, too! God's people are everywhere, so let's come together for a collective time of worship and encouragement, and as a reminder that we are on a mission together!

**April 26, 2020**

Worship from 4 - 5 pm  
Dinner from 5 - 7 pm

**November 1, 2020**

Worship from 4 - 5 pm  
Dinner from 5 - 7 pm

Questions? Contact **Scott R.** at **484-769-7228**

---

## FAMILY CAMP

May 22 - 24

This is a great time to enjoy our summer camp activities and re-energize your family's walk with God. Activities include **canoeing, kayaking, archery, riflery, swimming, crafts, and family friendly food!** The **lessons** often follow a family friendly movie theme and your speaker will provide thought provoking and **engaging messages** throughout the weekend.

**Cost: \$100.** Includes 2 nights cabin lodging, all meals and activities for up to 4 family members. (Upgraded lodging is available for additional cost during registration.) \$20 for each additional family member ages 5 and older.

**Children 4 and younger are free.**

Go to [manatawny.org](http://manatawny.org) for the schedule, to register, or for more information.

## JR/SR HIGH RETREAT

April 24 - 25; Grades 7 - 12

**You have fun at camp each summer, and now you have a chance to enjoy it in the Spring!** Join friends, summer staff, and other campers for a weekend that is highly social, relaxed and offers a lot of fun for teens. You'll participate in games and activities, enjoy some free time, and worship Christ through singing and studying God's Word. Invite your friends, get your youth group involved; you don't want to miss this!

**Cost: Only \$35!** (plus a \$4 processing fee)  
Includes a light dinner, snacks, program, activities, 1 night cabin lodging, breakfast and lunch on Saturday

Go to [manatawny.org](http://manatawny.org) for the schedule, to register, or for more information.

**Registration for this session will end on April 24.**

---

## LADIES RETREAT

May 1 - 2

Come join us for a weekend of refreshment and restoration as we enjoy God's creation and the fellowship of others! The weekend offers encouraging sessions, relaxation, and fellowship. Come make new friends, or bring a group from your area for a memorable weekend. We would love to have you join us as we seek God for what He desires to teach us through His Word.

**Cost: Only \$35!**

**Cost for Girls 12 and Under: Only \$10!**  
(plus a \$4 processing fee on all registrations)  
Includes a light dinner, snacks, program, activities, 1 night cabin lodging, breakfast and lunch on Saturday

Go to [manatawny.org](http://manatawny.org) for the schedule, to register, or for more information.



## CAMP SONSHINE

May 30 - 31

**Camp Sonshine is two days and one night of Christian summer camp offering love, acceptance, and fun to children ages 8 to 18 with special needs!** Everything is customized to make camp accessible and meet the varying needs of campers diagnosed with intellectual and developmental disabilities, and those who may use wheelchairs, walkers, or crutches. The goal is for campers to be engulfed by God's love and to have the time of their lives!

**Cost/Registrations:** Camp Sonshine is operated by volunteers and funded by donations from area churches, businesses, and gracious individuals. This allows your camper to attend for **FREE!**

Go to **manatawny.org** for the schedule, to register, or for more information.

---

## SUMMER CAMP OPEN HOUSE

May 23, 10 am - 4 pm

**Going to camp is a big step for many children, and it's common for both parents and children to feel uncertainty about being away from home for a week.** Prepare yourself and your camper for their summer experience at Camp Manatawny with a tour! During your visit, our camp staff will answer any questions, and show you how camp will open up a whole new world for your child.

Our Open House is **FREE** and open to the public. **No reservations required.** Rain or shine. Whether you're a returning camper who can't wait to see camp again or it's your first time visiting, don't miss out!

Can't make it to the open house?  
Call **610-707-3822** to arrange a personal tour.

---

## MEN'S RETREAT

September 25 - 26

**This is a great opportunity for young men to focus on their spiritual life and develop their faith along with peers, their fathers, and other men!** The youth will have their own special program and lessons and are highly encouraged to attend.

Speaker: **TBA**

Cost: Only \$35

**Cost for Boys 12 and Under: Only \$10!**

*(plus a \$4 processing fee on all registrations)*  
Includes a light dinner, snacks, program, activities, 1 night cabin lodging, breakfast and lunch on Saturday

Go to **manatawny.org** for the schedule, to register, or for more information.

---

## NEW! GOLDEN AGE RETREAT

June 11 - 13

**Are you 55 years of age or older?**

Then join us for an all-day retreat!  
(This retreat is NEW...more info to come!)

---

## MANATAWNY 5K RACE/FUN RUN

October 24 at 10 am

**Participate in the annual 5K run/walk to raise funds for camp.** Or, in the free 1-mile fun run!

Can't make it to camp? Run a virtual race!

Go to **manatawny.org** for schedule, to register, for cost of the race, and for more information.

---



## 2020 CAMP MANATAWNY LEADERSHIP CONFERENCE

Thursday, April 2 - Saturday, April 4

Leaders from camps in the mid-Atlantic region and surrounding areas that are affiliated with the Churches of Christ will come together to learn from common experiences.

Important subjects will be introduced by knowledgeable presenters (the attending camp leaders), followed by discussion and prayer. There will also be time for fun and fellowship.

Total cost is **\$60 per person**, covering the cost of food (6 meals). Lodging is complimentary. All camp leaders and their spouses are welcome. **Registration will end on Tuesday, April 2, 2020.**

Go to **manatawny.org** for the schedule, to register, or for more information.



# SERVE, LEAD, GROW...

**Summer Session Interns Wanted!** Camp Manatawny is hiring for the summer of 2020! They are looking for people to join their summer staff team who are passionate about God and teaching about Him to others.



## Requirements include:

- Active relationship with Jesus Christ and passion for Christian ministry
- A servant heart, enthusiasm and desire to work with children and teens
- Friendly, organized, and a self-starter who works well with others
- Responsible, punctual, and demonstrates sound judgement
- Experience working at a Christian Camp and as a counselor preferred

Must maintain all Pennsylvania and Federal background checks as well as meet any Board of Directors' pre-employment requirements

Duration: 9 Weeks; **June 19 - August 22** (Don't let

dates deter you if they don't fit your availability; contact us.)

Roles and Responsibilities: May include registration/check-in, counseling, housekeeping, kitchen work, maintenance, lifeguarding (if certified)

Benefits include: on-camp housing, \$200 per week, meals are provided when groups are on camp

For more information: **[www.manatawny.org/employment-opportunities](http://www.manatawny.org/employment-opportunities)**

To apply, e-mail **Dave** at **[dave.garrett@manatawny.org](mailto:dave.garrett@manatawny.org)**

*Currently accepting applicants aged 18 and older*

## RECEIVING OR PROVIDING FINANCIAL ASSISTANCE FOR CAMP MANATAWNY

Would you like your child to attend camp this summer, but you have concerns that you will not be able to pay for part or all of the camper fee? **If so, please see Dottie Grillo and let her know that you are interested in receiving financial assistance from the church.** You will then need to go to **[www.manatawny.org](http://www.manatawny.org)** and register your child for camp. During the registration process, you will have an opportunity to indicate that you will be receiving a **sponsorship** from our church. It is important that you indicate you are receiving a **sponsorship** (NOT a campship) from the Pitman Road Church of Christ, and the amount of the sponsorship so that you will be charged the correct balance, if any, at the end of the registration. **After you have completed the registration process, you must let Dottie know so that she can make sure the balance is paid before your child arrives at camp.**

**For members who are willing and able to contribute to sending a Pitman Road child to camp this summer, this would be the appropriate time to let Dottie know.** This summer's base camp fee is \$325, but there may be discounts that apply depending on each particular child's eligibility. Write your check to the Pitman Road Church of Christ, note "camp sponsorship" on the memo line, and drop it in the collection plate or give it to Dottie.



**(Our Vision)** To be a place where God's love is experienced, known, and shared by all...

### **How?**

...by **(Our Mission)** meeting others where they are and together being transformed into the image of Christ.

## SECRET SISTERS 2020 INFORMATION/REVEALING PARTY

If you're interested in becoming a Secret Sister for 2020, **the deadline is TODAY, March 1**, so see Dottie!



### Pertaining to the Secret Sisters Revealing Party:

- ⇒ If you are attending, please bring your Secret Sister's gift, along with a finger food.
- ⇒ If you are bringing a thank you gift for the Secret Sister who had you, please keep it with you during the party!
- ⇒ If you are unable to attend the party, give your gift to **Dottie** or **Debby Durham**, and they will bring it for you.

## CIRCLE OF SISTERS LIFE GROUP

**TOMORROW, Monday, March 2 (and every Monday following)**  
from 7:00 pm - 8:30 pm at the home of Lynne Sbaraglia

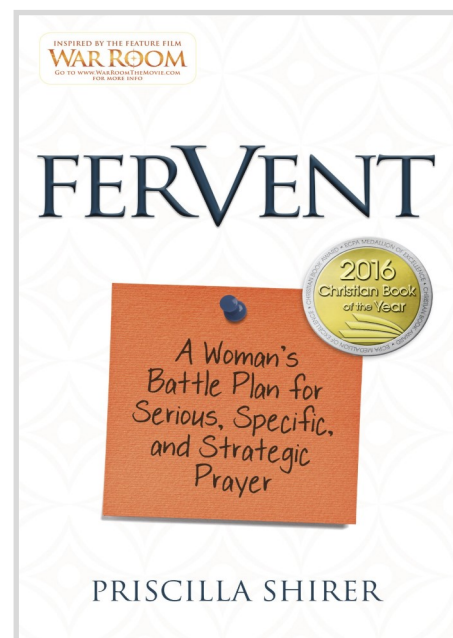
The Circle of Sisters LIFE Group will begin its Spring quarter by studying a new book called *Fervent*, by Priscilla Shirer. Following up on the author's book, *Discerning the Voice of God*, this book focuses on prayer.

If you would like a paper copy of this book, please let Lynne know ASAP! You can text Lynne at **(856) 419-0544**. Kindle versions also available.)

**So join us TOMORROW night, and see a skit along with starting our new book, *Fervent*!**

*Feel free to bring a friend or neighbor!*

For more information, check out the Welcome Center!



## FAMILY PROMISE HOST WEEK

Sunday, April 5, 2020 - Sunday, April 12, 2020



It's never too early to sign up to volunteer!

### Volunteer Positions Needed:

- |                |                |
|----------------|----------------|
| Shopper        | Moring Driver  |
| Laundry        | Evening Driver |
| Cook           | Evening Host   |
| Room Set Up    | Overnight Host |
| Room Breakdown | Van Transfer   |

(See **John Ashton** in the lobby for more info and/or the specific days that help is needed.)



## PITMAN SENIOR SPEAKER SERIES

Tuesday, March 10 at 2:00 pm

at Borough Hall

110 S. Broadway, Pitman, NJ 08071

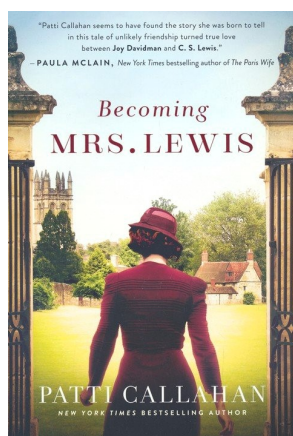
New Jersey State Senior Medicare Patrol

**Charles Clarkson** will discuss Medicare fraud and how to prevent it, as well as the various plans available for Seniors.

Mr. Clarkson will make this a fun and lively topic!

Free refreshments provided.

Questions? Please contact Councilwoman **Amy Rudley** ([amy.rudley@pitman.org](mailto:amy.rudley@pitman.org)).



## BOOK CLUB

Tuesday, March 10  
from 6:30 pm - 9:00 pm

Come and join us at the home of **Gloria Myerson** as we discuss the book ***Becoming Mrs. Lewis*** by Patti Callahan.

**Please RSVP by March 8.**

Hope to see you there!



## SPECIAL PALM SUNDAY WORSHIP SERVICE

Sunday, April 5  
10:00 am Worship Service

There will be a special worship service on the first Sunday of April, Palm Sunday. This will include an Easter Jam FX, which will begin at 10:45 am.

More information to come!

## ASSISTIVE LISTENING DEVICES

Visit the **Welcome Center** for more information on our hearing devices and new phone app made to help with hearing Sunday sermons!





# 2020 Spring Quarter Bible Classes

March • April • May

*Sunday Morning at 9:00 am*

Location	Intended For	Topic	Teachers
FLC	Adults	<b>Matthew: The Gospel of the King and His Kingdom</b> - Pitman Road University	Jackson House & Garth Hutchinson
B3 Chapel	Adults	<b>Proverbs: Connecting Practical Truth of Everyday Life</b>	Mike Broyles
Parke Place	Senior Saints	<b>Worship</b>	Jay Schneider

*Wednesday Evening at 7:00 pm*

Location	Intended For	Topic	Teachers
B1	Adults	<b>Barnabas Group</b>	Donna Lazar & Fran Point
B3 Chapel	Adults	<b>Hot Button Issues: Video &amp; Discussion</b>	Joey Peacher & Garth Hutchinson
B4	Adults	<b>Genesis: Part II</b>	Mike Grove

## CONNECT WITH US



[www.pitmanroadcoc.com](http://www.pitmanroadcoc.com)



@pitmanroadchurch



856.589.1500



[www.facebook.com/pitmanroadchurchofchrist](https://www.facebook.com/pitmanroadchurchofchrist)

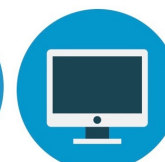
## WAYS TO GIVE



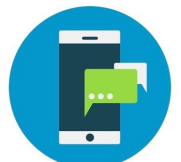
In person  
at the  
worship service.



Via the  
easyTi the  
mobile app.



On our  
website at  
pitmanroadcoc.com



Text to Give  
Text amount to  
856.209.6212

### Ministers

**Joey Peacher**, Preaching Minister.....jpeacher@cochrist.org  
..... 979-599-4590

**Dan Cooper**, Connections Minister .....dcooper@cochrist.org  
..... 856-589-4197

### Office Staff

**Dottie Grillo**.....dgrillo@cochrist.org

**Katelyn Ikeorha** ..... kikeorha@cochrist.org

### Elders

**Mike Broyles** .....mbroyles777@gmail.com

**Horatio Fenton** ..... horatiofenton@comcast.net

**Brian Holden**..... bcholden94@hotmail.com

**Garth Hutchinson**..... 609-414-2606  
..... grth.hutchinson@gmail.com

**Mike Lazar** ..... teacher.engineer@comcast.net

**John Peoples**..... 609-617-7451

**Dave Perine** ..... davidt.perine@comcast.net