

2024 Spring Quarter Bible Classes

March • April • May

Sunday Mornings at 9:00 AM

All Adults	"The Book of James" Led by Mike Grove in Room B4
Ladies' Class	"Gracelaced" Led by Different Women Each Week in Room B3 (chapel)
Middle School And High School	All tween and teen classes are held in the C-wing.
Cradle Roll, Pre-K, and K-5	All children's classes are held in the D-wing.
Senior Saints (Assisted Living)	Worship at Parke Place led by Jay Schneider

WAYS TO GIVE



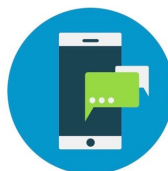
In person
at the
worship service.



Via the
easyTithe
mobile app.



On our
website at
pitmanroadcoc.com



Text to Give
Text amount to
856.209.6212

Weekly Average Contribution for January: \$6,595

Minister

Joey Peacher, Preaching Minister jpeacher@cochrist.org

Office Staff

Dottie Grillo dgrillo@cochrist.org

Katelyn Ikeorha kikeorha@cochrist.org

CONNECT WITH US



www.pitmanroadcoc.com



@pitmanroadchurch



856.589.1500



www.youtube.com/@Pitmancochrist



www.facebook.com/pitmanroadchurchofchrist

Elders

Mike Broyles mbroyles777@gmail.com

Dan Cooper dcooper@cochrist.org

Brian Holden bcholden94@hotmail.com

Andy Mychajlowycz andymych@hotmail.com

John Peoples john.peoples@solvay.com



PITMAN ROAD
CHURCH OF CHRIST

March 3, 2024 | Volume 6, Issue 3 | 500 Pitman Road, Sewell, NJ 08080

Our Vision

To be a
place where
God's love is
experienced,
known, and
shared by all.

Our Mission

Meet others
where they
are and
together be
transformed
into the
image of
Christ.

Pitman Road POST

Make
a difference

Move
into family

Meet
Jesus

TEACHER APPRECIATION LUNCHEON

SECOND SUNDAY SOCIAL POTLUCK
Sunday, March 10, 2024 after worship service in the Family Life Center

If you taught children’s Bible class this past year, join us as we thank and celebrate YOU!

Members, please bring a dish to share. Drinks will be provided.

Make sure that your food is prepared, heated, cut, and ready to serve. Each member is responsible for putting their own dish out at the beginning of the meal. Please clean any platters or serving utensils that you have borrowed from the church, and take your dish and leftovers home before you leave. Thank you!

rightnow MEDIA
Free Access to +20,000 Bible Study Videos

Every person at our church has free access to biblical video series on:

- Books of the Bible
- Marriage and parenting
- Mental health
- Men's studies
- Women's studies
- Youth studies

And so much more! Plus interactive devotionals and hundreds of safe, entertaining kids' shows.

Get free access

1. Click the link in your email invitation: <https://app.rightnowmedia.org/join/pitmanroc>
2. Create your free account.
3. Download the app for your device and start browsing!

* You can also text the code PITMANCOC to the number 48775, click the invitation link sent back to you, and register that way.

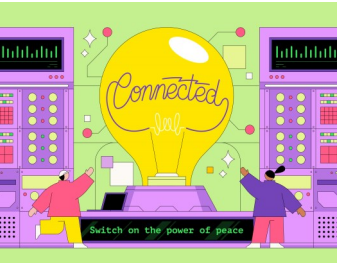
android chromecast iPhone & iPad Roku Apple TV fireTV



RIGHTNOW MEDIA APP

Every person at our church as access to over 20,000 biblical study video series! If you do not have the “RightNow Media” app yet, make sure to grab an information sheet off of the communion tables in the back of the auditorium, and create your FREE account today!

CHILDREN’S CURRICULUM



Every month, the children’s Bible class curriculum that we use (called “Orange”) provides a different engaging and strategic theme to help us teach God’s word to our kids.

The theme for March 2024 will be, “**Connected.**”

“Every day, you can make peace with the people around you—and prove you care more about each other than winning an argument.”

THANK YOU, PITMAN ROAD CHURCH FAMILY

1. During our recent health challenges with severe covid and a mini stroke, we are enormously blessed to have so many to deliver food, lift us in prayer, and generously check on our well-being! We seem to be on a recovery road, finally! Your prayers and God's love are a great team! Thank you for all your attention! Our Love to All and Our Thanks! - **Debbie and Max Lancaster**

* * * * *

2. We want to thank our friends and church family, from the bottom of our hearts, for all the love, prayers, and condolences as we remember Walter Scott Emond, who we fondly call "Scotty". With Much Thanks and Love, **Jean Landsdowne and Ted M. (Scotty's caretaker)**


* * * * *

3. I would like to thank everyone at church for their prayers, cards, calls, and text messages while I have been sick. And, also for the meals. This has been a long road to recovery. I had a pesky infection that challenged my team of doctors. It took two months in the hospital and rehab, but so far it seems that the infection has been eradicated. Your prayers were a big part of that! I cannot thank you enough. With love, **Katherine Cooper**

DAYLIGHT SAVING TIME BEGINS
NEXT SUNDAY, MARCH 10, 2024



Don't forget to
— SPRING FORWARD —
Set your clocks ahead an hour & enjoy the day!



FOR THE PANTRY

If you have an **overabundance of reusable shopping/grocery bags** (cloth, not plastic), and you are willing to donate some of them, the church pantry could really use them! Feel free to bring them in any Sunday, or drop them off any time during office hours. Thank you so much in advance!

Sign Up Now
to Build Communities
and Strengthen Lives!



Family Promise
Host Week



FAMILY PROMISE

Sunday, April 14, 2024 through Saturday, April 20, 2024

It's never too early to sign up for Family Promise! We will need MANY volunteers to cook and shop now that we are serving four transition houses. Please contact **John Ashton**, our coordinator, at **609-214-8522** or **jashton834@comcast.net** if you would like to help.

CAMP MANATAWNY

HELP WANTED

Applications for Summer Intern and Summer Nurse Intern/Assistant positions are available.

If you are 18 years of age or older, please consider joining our team this summer!

Scan QR Code →





WOMEN IN THE WORD

Katherine Cooper's Tuesday morning women's Bible study will be resuming **Tuesday, March 12th**, at 9:45 AM in room B3 (chapel).



CONGRATS, ZACH!

Zachary Angelo was baptized by Joey on Sunday, February 11, 2024. Congratulations, and welcome to the family! We are celebrating with you!


Bring Your Own

Craft Day

Saturday, March 23


Noon to 5:00 PM in the FLC
Snacks are provided! Join us!





AREA WIDE WORSHIP

Sunday, May 5, 2024
Here at Pitman Road
Worship will be at 11 AM with a meal to follow. Details to come!



IN LOVING MEMORY

John Goodman went to be with the Lord on Saturday, February 17, 2024. He was so loved and will be missed by all who knew him. We send our love, compassion, prayers, and hugs to Judy and the rest of the family during this difficult time. We grieve, but not as those who have no hope!



KITCHEN WORK DAYS

Friday March 22nd – Saturday March 23rd



WORK & WORSHIP WEEKEND

Friday April 19th – Sunday April 21st



HELP GET CAMP READY FOR SPRING RETREATS & SUMMER SESSIONS

Join us for two days of work and fellowship! This Spring, our traditional "Work & Worship" is being split into two:

1. "Kitchen Work Days", **Friday, March 22 and Saturday, March 23** (www.manatawny.org/kitchenworkdays) This is for all the Spring tasks in the Kitchen and Dining Hall. Registration will end on March 31.
2. "Work & Worship Weekend", **Friday, April 19 to Sunday, April 21** (www.manatawny.org/workandworship) This is for all of the other Spring tasks at Camp. Registration will end on April 21.

There will be all kinds of work available for all different talents. Please be sure to register to reserve lodging and to help Camp prepare for the number of people attending. Lodging will be available on a first come basis and a schedule for the weekend will be sent on a later date to those who are registered. To register, or for more information on either of these work days, visit manatawny.org.

We hope you can join us to help on one of these weekends. Please visit the links above for more information!

ANNUAL CORPORATION MEETING

Camp's Annual Meeting will be on **Sunday, April 21**.



2024
**ANNUAL
MEETING**
Sunday, April 21

Everyone Welcome!

This is the time of year that we ask you to become a member of Camp Manatawny and vote for our Board of Directors. Your paid membership helps us by creating a solid foundation of support.

There are two ways you may join; either as a voting member or as a non-voting member:

1. You may become a Voting Member if you are: (1) eighteen (18) years of age or older; and, (2) a member of the Church of Christ.
2. You may become a Non-Voting Member if you are: (1) younger than (18) years of age; and/or, (2) not a member of the Church of Christ.

Background information on each nominated Board Member and the election ballot are available in your UltraCamp account. Click on the button shown to complete the ballot and pay your membership fee. Please complete one ballot for each paid voting member registered in your UltraCamp account. The Board of Directors at Camp Manatawny love to hear from and meet with the members of the corporation and the extended Camp community. We are thrilled to hear your stories of how Camp has impacted your lives for Christ. We also feel it is important to learn of any concerns you may have about Camp. Informally, many of our members and partners reach out to us on a Sunday morning at church, but please know, even if we do not worship together at the same local congregation, you may reach out to the Board Members through email by visiting <https://www.manatawny.org/staff> and clicking on the member that you would like to contact.

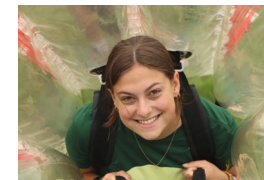
We encourage everyone to partner with us by becoming a member. We appreciate everyone who has joined so far and for those planning on joining us.

Confirm your membership, pay your dues, and vote for board members before meeting at: www.manatawny.org/annualmeeting

Camp Manatawny's Facebook Page: www.facebook.com/Manatawny

MANATAWNY SUMMER CAMP SCHEDULE

Year after year, campers return to Camp Manatawny to renew the strong bonds of friendship they have built while at Camp. Camp Manatawny hopes to provide each and every camper with a meaningful and memorable experience. The ultimate desire and hope of each director and staff member is for young people's lives to be transformed through the love of Jesus!



Overnight Camp

For campers completing 1st grade through 12th grade; \$429 per week (plus a \$4 processing fee)

Overnight camp allows campers to enjoy the adventures and wonder of the outdoors, while growing in their relationship with God and others. They will participate in a large variety of activities, while learning Christian values and maturing physically, emotionally, and spiritually. Here, campers will develop life-long relationships, all while having the time of their lives!

SENIOR HIGH 2, Grades 11 & 12: [June 22 - June 29](#)

SENIOR HIGH 1, Grades 9 & 10: [June 29 - July 6](#)

JR. HIGH 2, Grades 7, 8, & 9 - [July 6 - July 13](#)

JR. HIGH 1, Grades 5, 6, & 7 - [July 13 - July 20](#)

INTERMEDIATE, Grades 4, 5, & 6 - [July 20 - July 27](#)

ELEMENTARY 2, Grades 3 & 4 - [July 27 - Aug. 3](#)

ELEMENTARY 1, Grades 1 & 2 - [Aug. 3 - Aug. 10](#)

Day Camp

For campers completing 1st grade through 6th grade; \$295 per week (plus a \$4 processing fee)

Five days of building friendships in the local community! Activities include: Bible lessons, athletics, swimming, crafts, archery, target shooting, canoes, climbing wall, and much more. Breakfast and lunch are provided. Each Day Camp session runs from Monday to Friday, between 8AM - 5PM. Each week is targeted at specific grade levels with activities divided into cohorts, where appropriate. Campers stay on-site (no off-site day trips).

WEEK 1, Grades 5 to 7: [July 15 - July 19](#)

WEEK 2, Grades 4 to 6: [July 22 - July 26](#)

WEEK 3, Grades 3 to 4: [July 29 - Aug. 2](#)

WEEK 4, Grades 1 to 2: [Aug. 5 - Aug. 9](#)

Registration for 2024 Summer Sessions is now open. Go to www.manatawny.org for more information!

CAMP MANATAWNY FEES AND DISCOUNTS FOR 2024 SUMMER SESSIONS

Register and pay in full by April 30 and pay \$399!
(a \$26 discount)

Register after April 30 and pay the full \$429.

\$4 processing fee on all registrations. \$50 (non-refundable) deposit REQUIRED at time of registration. Balance must be PAID IN FULL prior to start of session.



First-Time Camper Discount: All first-time campers are welcomed with a **\$50 discount**.

Multi-Child Discount: Families that register more than two campers from their immediate family or legal guardian will receive a **\$40 discount per additional camper**. Applies to the 3rd or more child.

Multi-Week Discount: Only applies to campers who have completed grades 4 through 9. If attending more than one week, **the second week is \$100 off**.



CAMP MANATAWNY EVENTS IN 2024

Go to manatawny.org for the schedule, to register, or for more information.

JR/SR HIGH RETREAT (TWICE!)

(SPRING) April 26 - 27; Grades 7 - 12

(FALL) October 10 - 12; Grades 7 - 12

You have fun at camp each summer, and now you have a chance to enjoy it in the Spring and Fall! Join friends, summer staff, and other campers for games, campfires, and growing in your relationship with Christ. Be sure to invite new-to-camp friends!

Spring Cost: \$45 (plus a \$4 processing fee)
Registration for SPRING session will end on April 26.

Fall Cost: TBA (plus a \$4 processing fee) Registration for FALL session will end on October 11.

Includes a light dinner, snacks, all activities, 1 night cabin lodging, breakfast/lunch on Saturday.



LADIES RETREAT

May 3 - 4

Come join us for a weekend of refreshment and restoration as we enjoy God's creation! Attend encouraging sessions, relax, and fellowship with sisters. Make new friends or bring a group from your area for a memorable weekend. We would love to have you join us as we strive to understand what God teaches us through His Word. what He desires to teach us through His Word.

Cost: \$45
Cost for Girls 12 and Under: Only \$10!
(plus a \$4 processing fee on all registrations)

Includes a light dinner, snacks, program, activities, 1 night cabin lodging, breakfast and lunch on Saturday. Speaker will be announced shortly.

CAMPSHIP ONLINE FUNDRAISER

May 18 - 24

This event is NEW this year! Keep an eye out for details and registration information.

FAMILY CAMP (TWICE!)

(SPRING) May 24 - 26

(FALL) August 30 - September 1

The goal of this weekend is to provide you and your family with activities and time to relax together. We hope that you will come away from this weekend feeling refreshed and closer to God and your family.

Cost For Each Session: \$130.

Includes summer cabin lodging; all meals and activities for up to 4 family members. (Upgraded lodging is available for additional cost during registration.) \$20 for each additional family member ages 5 and older. Children 4 and younger are free.

SUMMER CAMP OPEN HOUSE

May 25, 10 am - 4 pm

Going to camp is a big step for many children, and it's common for both parents and children to feel uncertainty about being away from home for a week. Prepare yourself and your camper for their summer experience at Camp Manatawny with a tour! During your visit, our camp staff will answer any questions, and show you how camp will open up a whole new world for your child.

Our Open House is **FREE** and open to the public. **No reservations required.** Rain or shine. Whether you're a returning camper who can't wait to see camp again or it's your first time visiting, don't miss out!

Can't make it to the open house? No problem. Call **610-707-3822** to arrange a personal tour.



CAMP SONSHINE

June 1 - 2

Camp Sonshine offers love, acceptance, and fun to children ages 8 to 18 with special needs! Everything is customized to make camp accessible and meet the needs of campers diagnosed with intellectual and developmental disabilities. The goal is for campers to feel God's love and to have the time of their lives!



STAFF APPRECIATION DAY

August 31

We want to say "thank you" to our volunteers who worked at Camp during this year's summer sessions! **Now, come to Camp with no work responsibilities!**

Enjoy a full day of fun activities, tours, and dedication ceremonies. All volunteer staff are welcome! **10:00AM to 4:00PM.**

SINGLES RETREAT

September 6 - 7

This event is NEW this year! Keep an eye out for details and registration information.

MEN'S RETREAT

September 20 - 21

All men are encouraged to come to this life-changing weekend! Bring your sons, brothers, fathers, grandfathers, brothers-in-law, and co-workers.

Cost: \$45 Cost for Boys 12 and Under: Only \$10! (plus a \$4 processing fee on all registrations)

Includes a light dinner, snacks, program, activities, 1 night cabin lodging, breakfast and lunch on Saturday. Speaker will be announced shortly.

GAME NIGHT AND POTLUCK

November 3

This event is NEW this year! Keep an eye out for details and registration information.

LIFTU WINTER RETREAT

December 29 - January 1

For college-age young adults and high school seniors.

Cost: TBA (\$4 processing fee)



RECEIVING OR PROVIDING FINANCIAL ASSISTANCE FOR CAMP MANATAWNY

Would you like your child to attend camp this summer, but you have concerns that you will not be able to pay for part or all of the camper fee? **If so, please let Dottie Grillo know that you are interested in receiving financial assistance from the church.** You will then need to go to **www.manatawny.org** and register your child for camp. During the registration process, you will have an opportunity to indicate that you will be receiving a sponsorship from our church. It is important that you indicate you are receiving a **church sponsorship** (NOT a campship) from the Pitman Road Church of Christ, and the amount of the sponsorship so that you will be charged the correct balance, if any, at the end of the registration. **After you have completed the registration process, you must let Dottie know so that she can make sure the balance is paid before your child arrives at camp.**

For members who are willing and able to contribute to sending a Pitman Road child to camp this summer, this would be the appropriate time to let Dottie know. This summer's base camp fee is \$429, but there may be discounts that apply depending on each particular child's eligibility. Write your check to the Pitman Road Church of Christ, note "camp sponsorship" on the memo line, and drop it in the collection plate or give it to Dottie. You may also drop it off or mail it to the building any day during office hours.